



TAKE PRIDE IN YOUR LIVING

Purposefull Homes, @ Mokila

# Jumeriah Towers







# Jumeriah Towers

## A symphony of class!

What is it like to have your life filled with abundance?

It means you BE MORE and DO MORE every day, every moment.

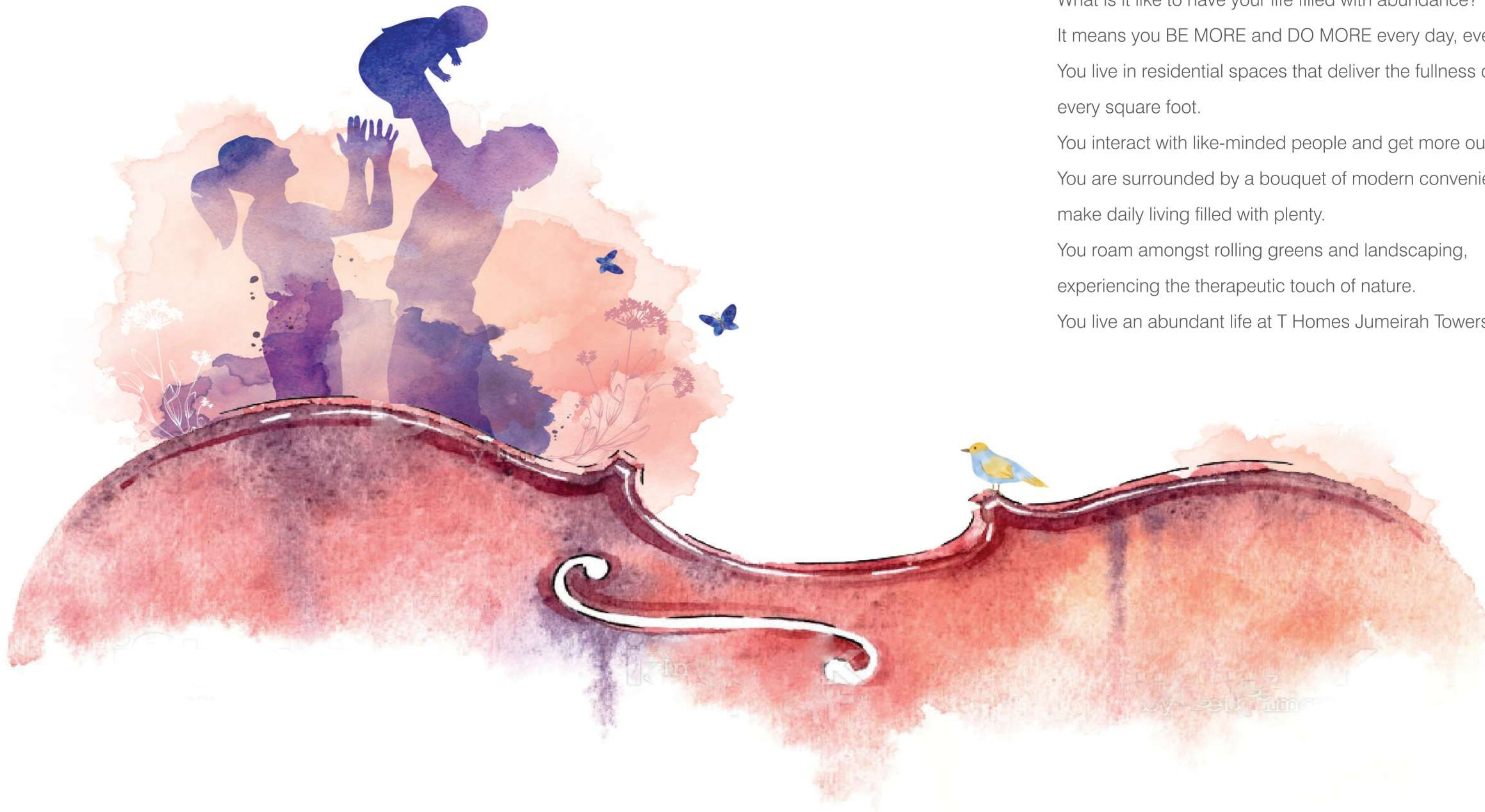
You live in residential spaces that deliver the fullness of life in every square foot.

You interact with like-minded people and get more out of life.

You are surrounded by a bouquet of modern conveniences that make daily living filled with plenty.

You roam amongst rolling greens and landscaping, experiencing the therapeutic touch of nature.

You live an abundant life at T Homes Jumeirah Towers





## ENTRY PORTAL WITH OVERHEAD PEDESTRIAN CONNECT

### Step into Abundance

The Grand Entry Gate is a prelude of the abundance you can expect at T Homes Jumeirah Towers. It sets the mood and tone of your daily life. Everything here is larger than life, but planned to a micro-detail that will leave you pleasantly surprised and doing more.



**Pergola Style** Entrance | **Double Height** Lobby





# Jumeriah Towers

## PART OF AN ABUNDANT LIFESTYLE

Every residential tower has its own arrival plaza, giving you a sense of having stepped into a world made for you. The pedestrian connect is wonderfully landscaped, so every time you look around, spectacular vistas of greenery greet you.







## Music to the Soul!

To get into shape, T homes Jumeirah towers has options that will excite you to the core. The swimming pool is an area where you would love to let your hair down. Scintillating under the sparkling sky, it allows you to plunge into the crystal clear waters and come up completely rejuvenated. Your kids can join in the fun too!

The entire place is crafted to allow residents to stay in the pink of their health. Add to this, the sunbathing deck and undulating fresh air, the residents of T Homes Jumeirah Towers are bound to stay hale and hearty, always!

Welcome aboard for a healthy living!









## PURPOSEFULLY PLENTY

With so many thoughtfully and meticulously designed floor plans to choose from, you are not just choosing, you are designing your A future full of beautiful details.

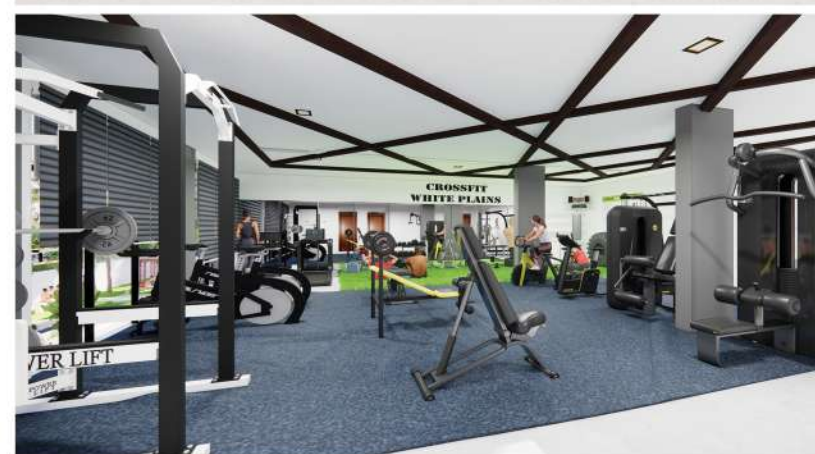


East Facing 3 Bhk Planing



West Facing 3 Bhk Planing





Live green. Stay green. Green is the new color that is enticing people of every culture and walk. Even before contemplating of owning a home, people are looking for greenery that elevates their lifestyle. Vistas of grandeur. Landscaped flora. Themed gardens. Sit-outs in the midst of a botanical surroundings. Oakshir Villas is the best place. Where the byword for awesome lifestyle is awesome foliage. Care to indulge?





## Pieces of art!

A work of art is known by the intricate and finest details it carries. Similarly, a project that has solid standards of opulence and beauty, elevate your lifestyle. Always stay ahead. Never compromise. These are the thoughts that compelled us to achieve a degree of distinction in our business. The very things which you see a reflection in Oakshir Villas. It's perfection crafted to delight your senses. Revell!

## SPECIFICATIONS & CONSTRUCTION DETAILS

### Super Structure

RCC Structure to withstand wind & seismic loads..  
Waffle Slab/Flat Slab for Parking Floors

### Structure Dressing

Light weight solid blocks with jointing mortar & Cement finish.  
Finishing Double coat plaster with smooth luppam finish and gypsum.

### Lobby & Lifts

Double Height entrancy lobby at ground level, flooring in Tiles, Wall Cladding up to false ceiling level.  
4 Nos Passenger & 2 Nos Fire/Service high speed elevators of reputed make.

### Fixtures & Fittings

Main Door  
: 3'6" x 7'6" Teak wood Frame & Vineer Flush Shutter.  
Internal Doors 3' x 7 Teak Wood Frame with laminated shutters.  
Windows : 4' x 6', 2 mm thick, Aluminium windows with 6mm thick glass.  
Hardware : Locks of reputed make, designer fittings for all doors.

### Toilets

Non-slippery ceramic tile flooring. Ceramic tiles wall cladding up to ceiling. EWC with flush tank & Washbasins of Reputed make, with granite slab finish. Grand Vanity in Master bed toilet. Ceramic washbasin in toilets.  
Single lever tap and shower mixer with cellphone shower unit. CP Fittings. Suspended pipelines in toilet within the PVC False ceiling.

### Kitchen

Designer tile dadoing up to Ceiling height above the granite platform level (Optional).  
Utility area with wash & sorage units, Water Traps & CP Fittings.

### Flooring

Vetrified tiles in Drawing, Living, Dining, Bedroom & Kitchen, Non-Slippery ceramic tiles in bathrooms & utility, Wood finish ceramic tiles in Balcony. SPC Wooden flooring in Master bedroom.

### Railings

Living & Bedroom Balcony - MS Raining 1200 mm high.

AC Ledges railing - MS Railing 1200 mm high.  
Staircase railing - MS Railing 900 mm high.

### Painting

Textured paint on external walls. Internal walls and ceiling in premium emulsion paint.  
Enamel paint on all MS Railing. Cement based paint in Parking areas.

### Electrical

Best quality copper wiring through PVC conduits concealed in walls and ceiling.  
Adequate power points with modular switches & products of reputed make..  
Cable TV and Internet points provided in Drawing, Living & Master Bedroom.  
Provision for installation of Split AC in Drawing, Living & All bedrooms.  
Power outlets for electrical appliances in Kitchen and in utility area.  
Proposed power sockets in balcony for outdoor decoration.  
Provision of individual meters for all apartments at respective floor level in the electrical shaft, HT Metering proposed.

### Power Back-Up

100% DG back-up power through generators for Lift, lights & fan points.

### Water Supply

Water supply in all toilets and kitchen, Drinking water supply in kitchen.  
Undetground & Overhead storage tanks of adequate capacity with bore and auxiliary source of water supply.  
Plumbing, STP & WTP  
Perfectly designed sewerage & water treatment plants for recycled usage.

### Ventilation & ODU

ODU - Provision for Split AC outdoor unit in balcony/utility area with accessibility to clean and repair.  
Ventilators-4' high(regular) /5' high (AC Ledges) operable UPVC/Aluminium frame and glass with provision for exhaust.  
Ventiation Cutouts - Pre-planned 10' ventiation cutouts for every room considering wind flows



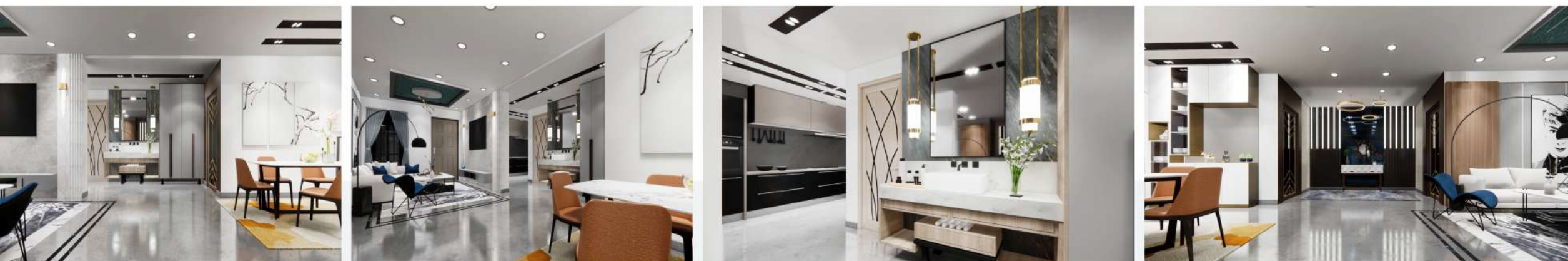


## In perfect harmony!

Design matters. Spaces liven up the mood. Brilliant style makes us feel like we are living it up! At T homes Jumeirah towers, top-notch architects ensure there's no lack of any of these. From tiniest details to an overall perspective for an amazing living, things are planned down to the last detail and executed with awesome finesse. There's no dearth for either grandeur or luxurious living. Yes, we are on a

mission of elevating lifestyles!

Are you game?!







# CLUB HOUSE & AMENITIES

Larger than life club house of 15,000 Square Feet.  
A spectacular combination of indoor & outdoor retreats.  
Smart access to every amenity & state of the art security,  
designed specially for safety and wellbeing of friends  
and family.

- |                                                                                                                     |                                                                                                                    |                                                                                                          |                                                                                                                 |                                                                                                                  |                                                                                                                 |                                                                                                                     |
|---------------------------------------------------------------------------------------------------------------------|--------------------------------------------------------------------------------------------------------------------|----------------------------------------------------------------------------------------------------------|-----------------------------------------------------------------------------------------------------------------|------------------------------------------------------------------------------------------------------------------|-----------------------------------------------------------------------------------------------------------------|---------------------------------------------------------------------------------------------------------------------|
| <br>Grand<br>Entry Reception     | <br>Guests<br>Waiting Area      | <br>Kids<br>Play Area | <br>Elders<br>Relaxing Park  | <br>Wellness<br>Jogging Track | <br>Sauna<br>Bath            | <br>Indoor<br>Gym                |
| <br>Smart Card<br>Access         | <br>Library<br>& Study          | <br>Indoor<br>Games   | <br>Basketball<br>Court      | <br>Cricket<br>Nets           | <br>Squash<br>Court          | <br>Swimming<br>Pool             |
| <br>24/7 CC TV<br>Surveillance | <br>Office &<br>Meeting Rooms | <br>Power<br>Backup | <br>Barbeque<br>Party Lawn | <br>Banquet<br>Hall         | <br>30'<br>Vertical Garden | <br>Green Belt &<br>Water Body |

CLUB HOUSE AT A GLANCE











# Jumeriah Towers



Survey no 126,127,128,138  
mokila, Shankarpally, Hyderabad